

FERNANDINA BEACH HIGH SCHOOL  
BAND PROGRAM  
2023-2024 HANDBOOK

**Tyler Odom, Director of Bands**

**Chris Webber, Principal**

Asa Jernigan, Assistant Band Director

Rebecca McKinney, Band Booster President



## Table of Contents

Mission.....	3
Class Requirements.....	3
Marching Band.....	3
Student Multi-Activity Policy.....	5
Symphonic Band.....	5
Jazz Band.....	5
Winterguard.....	6
Fair Share/Fundraising.....	6
Instrument Repair.....	6
Conduct and Discipline.....	7
Medical Forms and Mandatory Paperwork.....	8
Academic Performance.....	8
Music.....	8
Band Trips.....	8
Band Parents Association.....	9
Withdrawal/Removal from The Program.....	10

The information contained within this handbook details what is necessary of the student and his/her parent(s) or guardian(s), in order for the whole organization to be successful. We thank you for your participation in our organization. ***Go Pirates!!!!***

### **OUR MISSION...**

Is to create lifelong lovers of music, through a rich and diverse musical performance program. We do this through hard work, discipline, community engagement, as well as character/team building exercises. The marching band is the face of our music program, but the symphonic band is the root of our success. The jazz band and winterguard supplement those performance opportunities. Honor bands and solo & ensemble provide opportunities to build on that success.

### **IN SCHOOL CLASS REQUIREMENTS**

All students who wish to participate in the after school Marching Band, Symphonic Band, or Jazz Band must be in a band class during the regular school day. Students who are in a band class must participate in the FBHS Symphonic Band after school program (color guard students who DO NOT play a wind instrument are exempt from this requirement). If the student withdraws from Symphonic Band after school, they will **not** be eligible for Marching Band for the following year.

### **MARCHING BAND**

The marching band is the face of the FBHS band program. Students participating spend many hours practicing their craft. However, I have found it to be the time of year where students are **more** successful in their academics. Students understand the constraints on their time, and tend not to procrastinate as often during marching season. Marching band is also one of the most rewarding activities a student can choose to do. They will build bonds that will last a lifetime, they will learn what hard work turns into, and they will have a blast doing it all!

### **MARCHING BAND CAMP**

**MANDATORY MARCHING BAND CAMP FOR ALL BAND MEMBERS begins on Tuesday, July 25, 2023 and will run on the following schedule:**

July 25, 26 8am-5:30pm; July 27, 28 1pm-9pm; July 31 & August 1 8am-5:30pm;  
August 2, 3, 4, 7, 8 3pm-9pm.

Rehearsal times include water and snack breaks. It is very important for all Band members to hydrate properly at home before Band Camp so that they can better acclimate themselves to the heat. It is recommended that they eat a hearty breakfast before Band Camp, and that they avoid milk and overly sugary products. ALL band students are required to bring water, Gatorade, or PowerAde.

Students will break for lunch, for 45 minutes to an hour on 8am days. Freshman students are not allowed to leave campus at this time, unless accompanied by their parent/guardian. After lunch students will meet back in the band room for music rehearsal. We break for an extended snack break (about 30 minutes) between 2 and 4pm and spend the remainder of the day outside. All rehearsals will be on the FBHS campus, either in Robinson Band Hall or at the practice field by the gym. Inclement weather may change the planned location of rehearsal.

## **MARCHING BAND REHEARSALS AND PERFORMANCES**

**Your schedule should be planned to accommodate rehearsals and performances, not vice versa. pre-planned events are not an acceptable excuse. SAT and ACT testing should be scheduled before or after marching season.**

The Mighty Marching Pirates perform at football games and local parades, determined by the Director. Additionally, the Band participates in marching band competitions and district evaluation. Band members **MUST BE PRESENT** at all rehearsals, performances, parades, games, and competitions. Failure to attend rehearsal may result in a student not being allowed to perform. Continued failure to attend rehearsal may result in removal from the program. If a student must miss time, only doctor verified illness or a death in the family are considered to be excused. Rehearsal time must be made up when missed, either by coming early or staying late during camp, or by staying after school on Wednesday. Rehearsal time not made up, **WILL** result in the loss of performance privileges.

### **Once school begins, the rehearsal schedule will be:**

Mondays and Thursdays 4:15pm-6:30pm. Days which we do not have school will not have practices during the week. (Labor day and October teacher planning)

Time management is integral to the success of our program. A productive rehearsal is the product of 100% participation from all Band Members. Our calendar is posted on numerous platforms.

We understand that emergencies do arise. In the event of such an emergency, please notify the Director as soon as possible **BEFORE** the absence. It is preferred that the student communicate these challenges in an effort to learn communication skills vital for success later in life.

## **MARCHING BAND UNIFORMS**

Fitting of marching band uniforms will begin during music practice in June, or may have been completed at Mini camp. An addendum to this document will detail the cost of rental/purchase for the uniform components.

Students will be financially responsible for any damage to the uniform that may occur over the course of the school year. Each student is responsible for his/her uniform from the moment that it is checked out until it is properly returned to the storage rack in the band room or the equipment trailer. The students will receive instructions regarding proper folding and storage of their uniform and accessories during band camp. If a student notices damage to the uniform, they should report it immediately to avoid penalties.

Student bibbers, marching shoes, band shirts, and gloves will be ordered prior to football season. Marching students will also need to purchase a pair of tall, over the calf, black socks,

and knee-length black athletic shorts to wear under their bibber, not provided by the band. Each student must have clean shoes and gloves for every performance. All long hair must be styled in a way that will be decided upon prior to performances.

### **STUDENT MULTI-ACTIVITY POLICY**

This applies to Marching and Symphonic bands; Jazz students may not split time with another activity. If you intend to participate in another **school** activity which conflicts with band, you must document that activities meeting times, and submit them, and a plan to accommodate both groups after school activities, to the band director for approval. Activities that are not school related will not be considered as excused.

### **SYMPHONIC BAND**

The symphonic band program is when we work heavily on growing our musical abilities, refining our fundamentals, and building our passion for music.

The Symphonic Band season picks up as soon as marching band season ends. One week off of rehearsals may be given, based on the demands of the winter concert season. The season will go all the way until graduation.

Rehearsals will be Tuesday and Thursday from 3:40-6:00 pm and are mandatory. Students in class will be graded based on participation in these rehearsals. Please see and understand the multi-activity policy.

The uniform for the symphonic band will be a black dress chosen by the band director, or a black tux shirt. If you already have one, provided by the band, you do not need to buy a new one.

Being a section leader in marching band does not guarantee that the student will be first chair in the symphonic band. First chair is based on the students playing ability first and their behavior second.

### **JAZZ BAND**

The jazz band is an ensemble auditioned into by the band program's best musicians. The jazz band season begins near the end of marching season. There are several performances during the year, Sugar Pointe Music Festival and Shrimp Festival are two guarantees every year.

### **ATTENDANCE**

Students are required to attend all after school rehearsals for jazz, symphonic, and marching band. If rehearsals are missed, they WILL be made up by practicing before school, during lunch, or after school on Wednesday. The time required will be half the amount of rehearsal time missed; making one lunch or before school session not enough to complete the requirement. For marching band, skills/choreography/visuals, may need to be demonstrated to pass the make up requirement. This will be graded for jazz and symphonic band, and will affect performance opportunities for marching band. Winterguard will set their own attendance policy.

## **WINTERGUARD**

The Winterguard is an important branch of the FBHS band program. The guard instructional staff operates in a more autonomous manner over the winterguard program, but, ultimately all disciplinary decisions, rehearsal times, excusal of absences/tardy, etc.... rest with the band director. The guard instructional staff is there to provide training and guidance in proper technique and skills associated with the activity being performed at the highest ability level. There are fees associated with this activity as well, that will be finalized at a later time and will be invoiced accordingly. Parents and students are responsible for paying full balance for winterguard prior to the end of the winterguard season, and/or participating in appropriate fundraising efforts.

## **Fair Share and Fundraising**

The fair share for the band program helps to supplement the band's budget to allow all students to participate fully, where fundraising may not be enough. Families who are actively engaged in planning and implementing the Sugar Pointe Music Festival will have their fair share reduced the following year by \$25 (this does not stack from year to year). *In the event of a shortfall in fundraising due to cancellation of football games or the Music Festival, the boosters reserve the right to increase fair share, due to budget shortfalls.* Fair share for marching band will be set at \$275 for the 23/24 school year.

Families with more than one child will have \$100 taken off of each additional child's marching fairshare. This does not apply for jazz, symphonic, or winterguard.

Families who have a student in the marching band will be asked to work a minimum of three concession stand shifts during football season home games. Scheduling preference will be given to families of seniors. You may have anyone from your family, or that you know work on your family's behalf. Failure to meet this obligation will result in a \$75 per shift not worked penalty.

Students who are not in marching band, but are in symphonic and/or jazz band, fair share will be \$50 per band, and are not subject to the reduction mentioned above.

Winterguard will set their own fair share at the beginning of each season. Families who participate in basketball, soccer, and flag football concessions will be offered a reduction in fair share for winterguard for that season.

The advertising blitz, discount card sale, and year-round "holiday" sounds are all available opportunities for families to earn money towards fair share obligations. **YOU DO NOT NEED TO PAY ANY MONEY OUT OF YOUR POCKET, IT CAN ALL BE EARNED, WITH MINIMAL TIME.**

## **Instrument Repair**

Any school instrument needing repair, will incur a \$25 fee, unless the repair is a lesser amount. Families will be responsible for paying the fee prior to the instrument being sent for repair. The boosters will cover the remainder of the repair cost. Students must maintain their instruments to the highest of standards, and will be instructed in how to do that each August in class.

## **CONDUCT AND DISCIPLINE**

All members will adhere to the current Rules and Regulations of the Fernandina Beach High School Student Handbook. In addition, the Director expects all members to conduct themselves as young, respectful adults

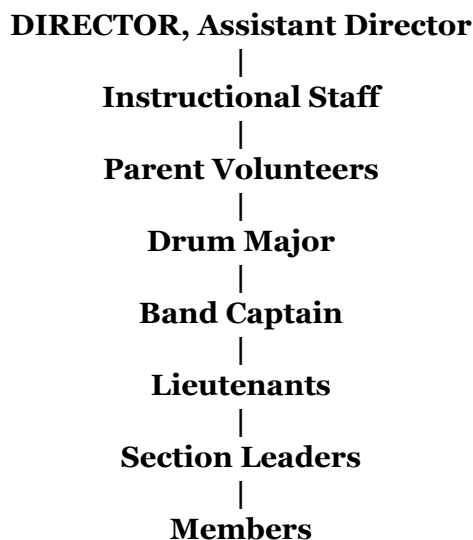
A. "Hazing" is a Class IV Violation of the Nassau County Code of Student Conduct. "Hazing" means any act or situation that recklessly or intentionally endangers the mental or physical health or safety of a student for purposes, including, but not limited to, initiation or admission into or affiliation with activities, clubs, or organizations operating under the sanction of a high school with grades 9 through 12. This code shall be enforced 24 hours a day, seven days a week on all school campuses/properties and at all school-sponsored activities on and off school campuses, including transportation. Any and all reported incidents will be investigated and may result in criminal prosecution and the most severe consequences provided for by School Board Policy.

**B. TARDINESS WILL NOT BE TOLERATED.**

If you are tardy, disciplinary actions will be issued accordingly. Call Time is defined as the beginning of an event, not the time to show up for the event. At call time, members should be ready for whatever is about to take place.

C. Any and all acts of insubordination (back talk, failure to follow orders given by the chain of command, profanity, indecent behavior, racial slurs, horse playing, smoking, consuming alcohol, vaping, use of illegal drugs, use or possession of unauthorized prescription drugs, verbal assault, bullying, and gossip) are PROHIBITED at all band events and rehearsals. A violation of any of the above-referenced acts will result in immediate disciplinary action and possible suspension or dismissal from the band program.

D. The chain of command is as follows:



There are several Instructors who serve at the discretion of the Director. These instructors have the full support and authority of the Band Director.

E. A member who has been assigned Out of School Suspension (OSS) will be removed from the band program, for the remainder of the current season. They may return to the program at the beginning of the following season, however a second OSS offense will cause the student to be removed permanently from the band program.

G. A member will receive a warning prior to any disciplinary action that may include push-ups, laps and other physical activities. It is the responsibility of the parent to inform the director in writing of any medical conditions that may prohibit their student from participating in rigorous physical activities. **The obligation to complete assigned disciplinary actions is not optional. Failure to comply may result in dismissal from the program.**

I. In band, we have a higher than normal level of visibility throughout our community. As such, students must conduct themselves accordingly when in public. Students will be subject to suspension or dismissal from the band program based upon verified acts of major misconduct or unlawful behavior while off of band time and/or school property, especially if wearing band shirts.

### **MEDICAL FORMS AND MANDATORY PAPERWORK**

All students are required to provide the following: Contractual Agreement; Student Information Sheet; \*Medical Authorization Form, Pre-participation Physical Evaluation; Consent and Release from Liability Certificate for Concussion and Heat-Related Illness; Consent and Release from Liability Certificate; \*Off-Campus School Activity Consent Form; \*Nassau County School Board Student Drug Testing Consent Form; \*Proof of Accident Insurance; and Release Form for Publication of Student Information. (\*denotes forms that require notarization). Additional forms may be required by the school.

### **ACADEMIC PERFORMANCE**

All students are required by the state of Florida to maintain a GPA of 2.0 or higher. Report cards will be shown to the Director at the end of each 9 weeks!

### **SHEET MUSIC**

All band students will be issued music. No students will be issued originals. If a student requires an additional copy of a piece of music, they will be charged \$1 per page.

### **BAND TRIPS**

Band members are required to ride the school bus to all football games, competitions, and district evaluations, unless a valid **medical** reason is submitted to the Director. However, a student may return home with his/her parent or guardian with prior approval from the Director. It is the student's and his/her parents' responsibility to provide written notification to the Director **prior** to departure on the band trip.

Students and parents will not be permitted to go on non-performing trips, or attend the annual band banquet unless all fees are current, or a documented plan is in place and being maintained.



Students who quit one band, but maintain membership in another, will not be permitted to go on fun/rewards trips.

Notification of return times will be provided as soon as they are available. Please allow a thirty (30) minute variation from the posted return time for the bus to arrive at the band room. **It is imperative that you are on time to pick up your student! Supervisory time ends 30 minutes upon return from a trip, or the end of a home event.**

All students will adhere to instructions and/or directions given by any and all chaperones on all trips.

The Drum Major and Section Leaders will assist the Director and the Equipment Manager by loading all necessary wind instruments on the trailer for practice, football games, and competitions. The Drumline and Guard will be responsible for loading all necessary equipment on the trailer for practice, football games, and competitions. Additionally, all sections are required to remain at the band room until all instruments, equipment and uniforms have been properly loaded and/or put away.

### **Mighty Marching Pirate Boosters**

The primary function of the MMPB is to raise money towards the operation of a highly competitive and musically diverse band program. The board of the association or another designated parent is in charge of all fundraising efforts. The association also assists in the planning and coordinating of trips and events for the band.

#### **The executive board:**

President- *Rebecca McKinney*

Vice President-*Stacie Kennedy*

Treasurers- *Richard Wrye and Emiko Rocha*

Secretary- *Missy Olson*

#### **Committee chairs:**

Concessions Coordinator-	Sara Ide
Ads/Sponsors Chair-	Richard Wrye
Communications -	Missy Olson
Head of Field Staff-	Christine Easterling
Uniforms-	Kelley Allgood
Hospitality-	Cristy Crews
Guard Liaison-	Carrie Vitori
Band Trip-	Richard Wrye
Festival-	Rebecca McKinney
Student Accounts	Leah Beckwith

### **WITHDRAWAL AND/OR REMOVAL**

A student who withdraws or is removed from any portion of the Band Program forfeits all awards and recognition that have been earned. In the event of withdrawal and/or dismissal, all school-owned instruments and materials must be returned within three (3) days. A student that withdraws or is dismissed will not be allowed to re-enter in the same season. A student seeking reinstatement must gain the Director's approval. Withdrawal or removal **does not** exempt you from financial or fundraising obligations. Once you sign this document you are agreeing to work all fundraising efforts and pay your "fair share".. Withdrawal from one performance organization, but not another will still forfeit your awards and recognitions and you still must gain the Director's permission to join that group the following season. At minimum, all fees will need to be paid in advance of the season beginning, which for marching band is determined as when drill numbers are finalized.

### **REFUND POLICY**

**ALL** money paid to the Fernandina Beach High School Band Booster Association is **NON-REFUNDABLE**.